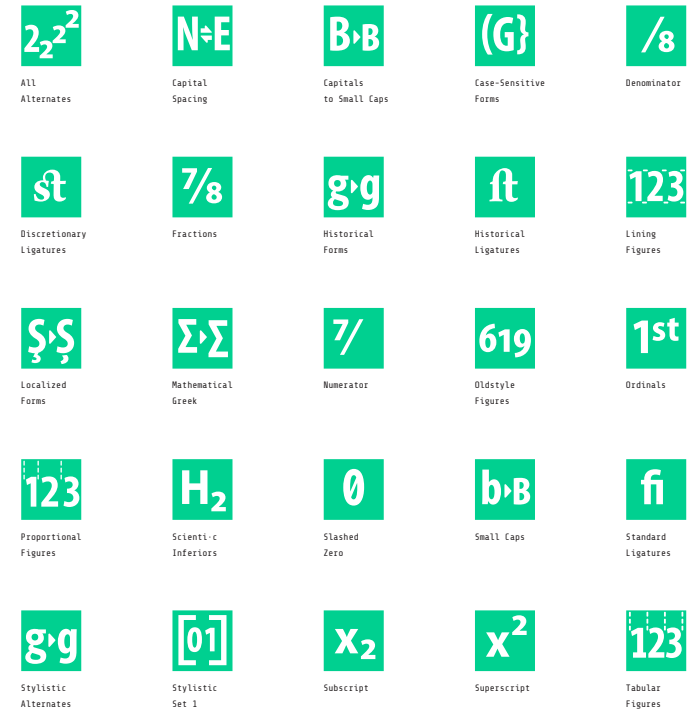


Technical Report [1224 Glyphs]

# Quist

Regular  
Medium  
Bold  
Headline

## OT-Features, Scripts & Languages



### Supported Script(s):

Latin  
Cyrillic  
Greek

### 54 languages and many more:

Afrikaans, Albanian, Basque, Bosnian, Breton, Bulgarian, Corsican, Czech, Danish, Dutch, English, Esperanto, Estonian, Faroese, Finnish, French, Galician, German, Greek, Greenlandic, Hungarian, Icelandic, Indonesian, Irish, Italian, Kurdish, Latvian, Leonese, Lithuanian, Luxembourgish, Malay, Malaysian, Malti, Manx, Norwegian, Occitan, Polish, Portuguese, Rhaeto-Romanic, Russian, Sami, Scottish Gaelic, Serbian Latin, Slovak, Slovene, Sorbian (Lower), Sorbian (Upper), Spanish, Swahili, Swedish, Turkish, Turkmen, Ukrainian, Walloon

## Code Pages

## Mac OS ##  
Mac OS Central European  
Mac OS Cyrillic  
Mac OS Greek  
Mac OS Ukrainian

## MS Windows ##  
MS Windows 1251 Cyrillic  
MS Windows 1252 Western (ANSI)  
MS Windows 1253 Greek  
MS Windows 1254 Turkish  
MS Windows 1257 Baltic  
MS Windows 1258 Vietnamese

## ISO 8859 ##  
ISO 8859-1 Latin 1 (Western)  
ISO 8859-3 Latin 3 (Tu, Malt, Gal, Esp)  
ISO 8859-4 Latin 4 (Baltic)  
ISO 8859-5 Cyrillic  
ISO 8859-9 Latin 5 (Turkish)  
ISO 8859-15 Latin 9

## Encoded Glyphs

### Basic Latin (0000-007F)

		!	"	#	\$	%	&	'	(	)	*	+	,
0000	0020	0021	0022	0023	0024	0025	0026	0027	0028	0029	002A	002B	002C
-	.	/	0	1	2	3	4	5	6	7	8	9	:
002D	002E	002F	0030	0031	0032	0033	0034	0035	0036	0037	0038	0039	003A
;	<	=	>	?	@	A	B	C	D	E	F	G	H
003B	003C	003D	003E	003F	0040	0041	0042	0043	0044	0045	0046	0047	0048
I	J	K	L	M	N	O	P	Q	R	S	T	U	V
0049	004A	004B	004C	004D	004E	004F	0050	0051	0052	0053	0054	0055	0056
W	X	Y	Z	[	\	]	^	_	`	a	b	c	d
0057	0058	0059	005A	005B	005C	005D	005E	005F	0060	0061	0062	0063	0064
e	f	g	h	i	j	k	l	m	n	o	p	q	r
0065	0066	0067	0068	0069	006A	006B	006C	006D	006E	006F	0070	0071	0072
s	t	u	v	w	x	y	z	{		}	~		
0073	0074	0075	0076	0077	0078	0079	007A	007B	007C	007D	007E		

## Encoded Glyphs

### Latin-1 Supplement (0080-00FF)

00A0	00A1	00A2	00A3	00A4	00A5	00A6	00A7	00A8	00A9	00AA	00AB	00AC	00AD
®	–	°	±	²	³	´	µ	¶	·	¸	¹	º	»
¼	½	¾	¿	À	Á	Â	Ã	Ä	Å	Æ	Ç	È	É
Ê	Ë	Ì	Í	Î	Ï	Ð	Ñ	Ò	Ó	Ô	Õ	Ö	×
Ø	Ù	Ú	Û	Ü	Ý	Þ	ß	à	á	â	ã	ä	å
æ	ç	è	é	ê	ë	ì	í	î	ï	ð	ñ	ò	ó
ô	õ	ö	÷	ø	ù	ú	û	ü	ý	þ	ÿ		
00F4	00F5	00F6	00F7	00F8	00F9	00FA	00FB	00FC	00FD	00FE	00FF		

Encoded Glyphs

Latin Extended-A (0100-017F)

Ā	ā	Ă	ă	Ą	ą	Ć	ć	Ĉ	ĉ	Ċ	ċ	Č	č
0100	0101	0102	0103	0104	0105	0106	0107	0108	0109	010A	010B	010C	010D
Ď	ď	Ð	đ	Ē	ē	Ě	ě	È	è	Ě	ě	Ě	ě
010E	010F	0110	0111	0112	0113	0114	0115	0116	0117	0118	0119	011A	011B
Ĝ	ĝ	Ğ	ğ	Ġ	ġ	Ģ	ģ	Ĥ	ĥ	Ħ	ħ	Ĩ	ĩ
011C	011D	011E	011F	0120	0121	0122	0123	0124	0125	0126	0127	0128	0129
Ī	ī	Ĳ	ĳ	Ĵ	ĵ	İ	ı	Ĳ	ĳ	Ĵ	ĵ	Ķ	ķ
012A	012B	012C	012D	012E	012F	0130	0131	0132	0133	0134	0135	0136	0137
Ķ	Ļ	ļ	Ł	ł	Ł	ł	Ł	ł	Ł	ł	Ń	ń	Ņ
0138	0139	013A	013B	013C	013D	013E	013F	0140	0141	0142	0143	0144	0145
Ņ	Ň	ň	ŋ	Ŋ	ŋ	Ō	ō	Ŏ	ö	Ŏ	ö	Œ	œ
0146	0147	0148	0149	014A	014B	014C	014D	014E	014F	0150	0151	0152	0153
Ŕ	ŕ	Ŗ	ŗ	Ř	ř	Ś	ś	Ŝ	ŝ	Ş	ş	Š	š
0154	0155	0156	0157	0158	0159	015A	015B	015C	015D	015E	015F	0160	0161

Encoded Glyphs

Š	š	ẏ	ẏ	Ũ	ũ	Ū	ū	Ŭ	ŭ	Ů	ů	Ű	ű
0164	0165	0166	0167	0168	0169	016A	016B	016C	016D	016E	016F	0170	0171

Ț	ț	Ŵ	ŵ	Ȳ	ȳ	ÿ	Ž	ž	Ẑ	ẑ	Ž	ž	ƒ
0172	0173	0174	0175	0176	0177	0178	0179	017A	017B	017C	017D	017E	017F

Latin Extended-B (0180-024F)

ƒ	Œ	œ	Ɔ	ɔ	Æ	æ	Ø	ø	Ş	ş	Ț	ț	ț
0192	01A0	01A1	01AF	01B0	01FC	01FD	01FE	01FF	0218	0219	021A	021A	021B

ț	Ț
021B	0237

Spacing Modifier Letters (02B0-02FF)

ˆ	˘	ˉ	˙	˚	◦	◌	˜	˝
02C6	02C7	02C9	02D8	02D9	02DA	02DB	02DC	02DD

Combining Diacritical Marks (0300-036F)

ˆ	˘	ˉ	˙	˚	◦	◌
0300	0301	0303	0309	0312	0323	0326

Greek and Coptic (0370-03FF)

;	´	ˆ	Ά	·	Έ	Η	ΐ	Ό	Υ	Ω	ΐ	Α	Β
037E	0384	0385	0386	0387	0388	0389	038A	038C	038E	038F	0390	0391	0392

Encoded Glyphs

Γ 0393	Δ 0394	Ε 0395	Ζ 0396	Η 0397	Θ 0398	Ι 0399	Κ 039A	Λ 039B	Μ 039C	Ν 039D	Ξ 039E	Ο 039F	Π 03A0
Ρ 03A1	Σ 03A3	Τ 03A4	Υ 03A5	Φ 03A6	Χ 03A7	Ψ 03A8	Ω 03A9	ϊ 03AA	ϋ 03AB	ά 03AC	έ 03AD	ή 03AE	ί 03AF
ύ 03B0	α 03B1	β 03B2	γ 03B3	δ 03B4	ε 03B5	ζ 03B6	η 03B7	θ 03B8	ι 03B9	κ 03BA	λ 03BB	μ 03BC	ν 03BD
ξ 03BE	ο 03BF	π 03C0	ρ 03C1	ς 03C2	σ 03C3	τ 03C4	υ 03C5	φ 03C6	χ 03C7	ψ 03C8	ω 03C9	ϊ 03CA	ϋ 03CB
ό 03CC	ύ 03CD	ώ 03CE											

Cyrillic (0400-04FF)

Ё 0401	Ђ 0402	Ѓ 0403	Є 0404	Ѕ 0405	І 0406	Ї 0407	Ј 0408	Љ 0409	Њ 040A	Ћ 040B	Ќ 040C	Ў 040E	Џ 040F
А 0410	Б 0411	В 0412	Г 0413	Д 0414	Е 0415	Ж 0416	З 0417	И 0418	Й 0419	К 041A	Л 041B	М 041C	Н 041D



Encoded Glyphs

О 041E	П 041F	Р 0420	С 0421	Т 0422	У 0423	Ф 0424	Х 0425	Ц 0426	Ч 0427	Ш 0428	Щ 0429	Ъ 042A	Ы 042B
Ь 042C	Э 042D	Ю 042E	Я 042F	а 0430	б 0431	в 0432	г 0433	д 0434	е 0435	ж 0436	з 0437	и 0438	й 0439
К 043A	Л 043B	М 043C	Н 043D	О 043E	П 043F	р 0440	с 0441	т 0442	у 0443	ф 0444	х 0445	ц 0446	ч 0447
Ш 0448	Щ 0449	Ъ 044A	Ы 044B	Ь 044C	Э 044D	Ю 044E	Я 044F	ё 0451	ђ 0452	ѓ 0453	є 0454	ѕ 0455	і 0456
ї 0457	ј 0458	љ 0459	њ 045A	ћ 045B	ќ 045C	ђ 045E	џ 045F	џ 0462	џ 0463	џ 0472	џ 0473	V 0474	v 0475
Ґ 0490	ґ 0491	Ғ 0492	ғ 0493	Җ 0496	җ 0497	Ҙ 0498	ҙ 0499	Қ 049A	қ 049B	К 049C	к 049D	К 04A0	к 04A1
Ң 04A2	ң 04A3	Ҫ 04AA	ç 04AB	Ү 04AE	ү 04AF	Ұ 04B0	ұ 04B1	Х 04B2	х 04B3	Ҷ 04B8	ҷ 04B9	Һ 04BA	һ 04BB

Encoded Glyphs

ǀ 04C0	ǂ 04CB	ǃ 04CC	Ǆ 04CF	ǅ 04D8	ǆ 04D9	Ǉ 04E2	ǈ 04E3	ǉ 04E8	Ǌ 04E9	ǋ 04EE	ǌ 04EF		
Latin Extended Additional (1E00-1EFF)													
ǎ 1E02	Ǐ 1E03	ǐ 1E0A	Ǒ 1E0B	ǒ 1E1E	Ǔ 1E1F	ǔ 1E40	Ǖ 1E41	ǖ 1E56	Ǘ 1E57	Ǚ 1E60	ǚ 1E61	Ǜ 1E6A	ǜ 1E6B
ǟ 1E6C	Ǡ 1E6D	ǡ 1E80	Ǣ 1E81	ǣ 1E82	Ǥ 1E83	ǥ 1E84	Ǧ 1E85	ǧ 1EA0	Ǩ 1EA1	ǩ 1EA2	Ǫ 1EA3	ǫ 1EA4	Ǭ 1EA5
ǭ 1EA6	Ǯ 1EA7	ǯ 1EA8	ǰ 1EA9	Ǳ 1EAA	ǲ 1EAB	ǳ 1EAC	Ǵ 1EAD	ǵ 1EAE	Ƕ 1EAF	Ƿ 1EB0	Ǹ 1EB1	ǹ 1EB2	Ǻ 1EB3
ǻ 1EB4	Ǽ 1EB5	ǽ 1EB6	ǿ 1EB7	Ǿ 1EB8	Ǡ 1EB9	ǡ 1EBA	ǣ 1EBB	Ǥ 1EBC	ǥ 1EBD	ǧ 1EBE	Ǩ 1EBF	ǩ 1EC0	Ǭ 1EC1
Ǧ 1EC2	ǧ 1EC3	Ǩ 1EC4	ǩ 1EC5	Ǭ 1EC6	ǭ 1EC7	Ǯ 1EC8	ǯ 1EC9	ǰ 1ECA	Ǳ 1ECB	ǲ 1ECC	ǳ 1ECD	Ǵ 1ECE	ǵ 1ECF
Ǯ 1ED0	ǰ 1ED1	Ǳ 1ED2	ǲ 1ED3	ǳ 1ED4	Ǵ 1ED5	ǵ 1ED6	Ƕ 1ED7	Ƿ 1ED8	Ǹ 1ED9	ǹ 1EDA	Ǻ 1EDB	ǻ 1EDC	Ǽ 1EDD

## Encoded Glyphs

Ŏ	ơ	Õ	õ	Ơ	ơ	Ụ	ụ	Ủ	ủ	Ứ	ứ	Ừ	ừ
1EEDE	1EEDF	1EE0	1EE1	1EE2	1EE3	1EE4	1EE5	1EE6	1EE7	1EE8	1EE9	1EEA	1EEB

Ủ	ủ	Û	ũ	Ự	ự	Ỳ	ỳ	Ỵ	ỵ	Ỷ	ỷ	Ỹ	ỹ
1EEC	1EED	1EEE	1EEF	1EF0	1EF1	1EF2	1EF3	1EF4	1EF5	1EF6	1EF7	1EF8	1EF9

### General Punctuation (2000-206F)

—	—	—	—	‘	’	,	“	”	”	†	‡	▪	•
2012	2013	2014	2015	2018	2019	201A	201C	201D	201E	2020	2021	2022	2024

..	...	‰	<	>	!!	/
2025	2026	2030	2039	203A	203C	2044

### Superscripts and Subscripts (2070-209F)

0	ı	4	5	6	7	8	9	(	)	n	0	1	2
2070	2071	2074	2075	2076	2077	2078	2079	207D	207E	207F	2080	2081	2082

3	4	5	6	7	8	9	(	)
2083	2084	2085	2086	2087	2088	2089	208D	208E

### Currency Symbols (20A0-20CF)

₱	₫	€
20A1	20AB	20AC

## Encoded Glyphs

### Letterlike Symbols (2100-214F)



2113



2116



2122



2126



212E

### Number Forms (2150-218F)



2153



2154



215B



215C



215D



215E

### Arrows (2190-21FF)



2190



2191



2192



2193



2194



2195



2196



2197



2198



2199

### Mathematical Operators (2200-22FF)



2202



2206



220F



2211



2212



2215



2219



221A



221E



222B



2248



2260



2264



2265



22C6

### Geometric Shapes (25A0-25FF)



25CA

### Private Use Area (E000-F8FF)



F600

## Encoded Glyphs

### Alphabetic Presentation Forms (FB00-FB4F)



FB01



FB02

## Unencoded Glyphs

### Small Capitals

İ idotaccent.sc	À a.sc	Á aacute.sc	Ă abreve.sc	Ǻ abreveacute.sc	ǻ abrevedotbelow.sc	Ǽ abrevegrave.sc	Ǿ abrevehookabove.sc	ǿ abrevetilde.sc	Â acircum-ex.sc	Ã acircum-exacute.sc	Ạ acircum-exdotbelow.sc	Ǽ acircum-exgrave.sc	Ǻ acircum-exhookabove.sc
Ǻ acircum-xtilde.sc	Ä adieresis.sc	Ạ adotbelow.sc	À agrave.sc	Ǻ ahookabove.sc	Ā amacron.sc	Ą aogonek.sc	Å aring.sc	Ã atilde.sc	Æ ae.sc	É aeacute.sc	Β b.sc	Ḃ bdotaccent.sc	Ɔ c.sc
Ć cacute.sc	Č ccaron.sc	Ç ccedilla.sc	Ĉ ccircum-ex.sc	Ċ cdotaccent.sc	Ɖ d.sc	Ð eth.sc	Ǿ dcaron.sc	Đ dcroat.sc	Đ ddotaccent.sc	Ǝ e.sc	É eacute.sc	Ě ebreve.sc	Ě ecaron.sc
Ê ecircum-ex.sc	É ecircum-exacute.sc	Ẹ ecircum-exdotbelow.sc	Ě ecircum-exgrave.sc	Ǻ ecircum-exhookabove.sc	Ẽ ecircum-xtilde.sc	Ë edieresis.sc	È edotaccent.sc	Ẹ edotbelow.sc	È egrave.sc	Ẹ ehookabove.sc	Ē emacron.sc	Ę eogonek.sc	Ẽ etilde.sc
Ƒ f.sc	Ḟ fdotaccent.sc	Ɠ g.sc	Ǧ gbreve.sc	Ĝ gcircum-ex.sc	Ǵ gcommaaccent.sc	Ġ gdotaccent.sc	Ƨ h.sc	Ĥ hbar.sc	Ĥ hcircum-ex.sc	Ɲ i.sc	Ɲ idotless.sc	Í iacute.sc	Ĳ ibreve.sc
Î icircum-ex.sc	Ï idieresis.sc	Ị idotbelow.sc	Ì igrave.sc	Ǫ ihookabove.sc	Ʒ ij.sc	Ī imacron.sc	ƶ iogonek.sc	Ĩ itilde.sc	ƶ j.sc	Ĵ jcircum-ex.sc	Ƙ k.sc	Ƙ kcommaaccent.sc	ƚ l.sc
Ĺ lacute.sc	Ł ldot.latn_CAT.sc	Ł lcaron.sc	Ł lcommaaccent.sc	Ł ldot.sc	Ł lslash.sc	Ɔ m.sc	Ḣ mdotaccent.sc	Ɔ n.sc	Ɔ nacute.sc	Ñ ncaron.sc	Ɔ ncommaaccent.sc	Ɔ eng.sc	Ñ ntilde.sc

## Unencoded Glyphs

Ō	Ó	Ŏ	Ô	Õ	Ô	Ö	Ő	Õ	Ö	Ọ	Ò	Ỏ	Ơ
o.sc	oacute.sc	obreve.sc	ocircum-ex.sc	ocircum-exacute.sc	ocircum-exdotbelow.sc	ocircum-exgrave.sc	ocircum-exhookabove.sc	ocircum-extilde.sc	odieresis.sc	odotbelow.sc	ograve.sc	ohookabove.sc	ohorn.sc
Ó	Ơ	Ờ	Ở	Ỡ	Ő	Ō	Ø	Œ	Õ	Œ	Ɔ	Ƿ	Ɔ
ohornacute.sc	ohorndotbelow.sc	ohorngrave.sc	ohornhookabove.sc	ohorntilde.sc	ohungarumlaut.sc	omacron.sc	oslash.sc	oslashacute.sc	otilde.sc	oe.sc	p.sc	pdotaccent.sc	thorn.sc
Q	R	Ŕ	Ř	Ŗ	S	Ś	Š	Ş	Ŝ	Ș	Š	T	Ʀ
q.sc	r.sc	racute.sc	rcaron.sc	rcommaaccent.sc	s.sc	sacute.sc	scaron.sc	scedilla.sc	scircum-ex.sc	scommaaccent.sc	sdotaccent.sc	t.sc	tbar.sc
Ť	Ț	Ț	Ț	Ț	U	Ú	Ů	Û	Ü	Ụ	Ù	Ủ	Ʈ
tcaron.sc	tcommaaccent.sc	tcommaaccent.sc	tdotaccent.sc	tdotbelow.sc	u.sc	uacute.sc	ubreve.sc	ucircum-ex.sc	udieresis.sc	udotbelow.sc	ugrave.sc	uhookabove.sc	uhorn.sc
Ú	Ư	Ù	Ủ	Û	Ű	Ū	Ů	Û	Ů	V	W	Ŵ	Ŷ
uhornacute.sc	uhorndotbelow.sc	uhorngrave.sc	uhornhookabove.sc	uhorntilde.sc	uhungarumlaut.sc	umacron.sc	uogonek.sc	uring.sc	utilde.sc	v.sc	w.sc	wacute.sc	wcircum-ex.sc
Ÿ	Ẁ	X	Y	Ý	ÿ	ÿ	ÿ	ÿ	ÿ	Z	Ẑ	Ẓ	Ẕ
wdieresis.sc	wgrave.sc	x.sc	y.sc	yacute.sc	ycircum-ex.sc	ydieresis.sc	ydotbelow.sc	ygrave.sc	yhookabove.sc	ytilde.sc	z.sc	zacute.sc	zcaron.sc
Ž	А	Б	В	Г	Ґ	Ґ	Д	Е	Ё	Ж	З	И	Й
zdotaccent.sc	a-cy.sc	be-cy.sc	ve-cy.sc	ge-cy.sc	gje-cy.sc	ghepturn-cy.sc	de-cy.sc	ie-cy.sc	io-cy.sc	zhe-cy.sc	ze-cy.sc	ii-cy.sc	iishort-cy.sc

Unencoded Glyphs

К ka-cy.sc	Ѐ kje-cy.sc	Л el-cy.sc	М em-cy.sc	Н en-cy.sc	О o-cy.sc	П pe-cy.sc	Р er-cy.sc	С es-cy.sc	Т te-cy.sc	У u-cy.sc	Ў ushort-cy.sc	Ф ef-cy.sc	Х ha-cy.sc
Ч che-cy.sc	Ц tse-cy.sc	Ш sha-cy.sc	Щ shcha-cy.sc	Ц dze-cy.sc	Ь softsign-cy.sc	Ъ hardsign-cy.sc	Ы yeru-cy.sc	Ь lje-cy.sc	НЬ nje-cy.sc	Ѕ dze-cy.sc	Є e-cy.sc	Э ereversed-cy.sc	І i-cy.sc
Ї yi-cy.sc	Ј je-cy.sc	Ћ tshe-cy.sc	Ю lu-cy.sc	Я la-cy.sc	Ђ dje-cy.sc	Ђ yat-cy.sc	Ө ta-cy.sc	У tzhitsa-cy.sc	ƒ ghestroke-cy.sc	Ж zhedescender-cy.sc	З zedescender-cy.sc	Қ kadesender-cy.sc	К kaverticallstroke-cy.sc
К kabashkir-cy.sc	Ң endescender-cy.sc	Ҙ esdescender-cy.sc	У ustrait-cy.sc	Ү ustraitstroke-cy.sc	Х hadescender-cy.sc	Ч cheverticalstroke-cy.sc	Һ shha-cy.sc	І palochka-cy.sc	Ҙ chekhakassian-cy.sc	Ә schwa-cy.sc	Й imacron-cy.sc	Ө obarred-cy.sc	Ү umacron-cy.sc
Α alpha.sc	Β beta.sc	Γ gamma.sc	Δ delta.sc	Ε epsilon.sc	Ζ zeta.sc	Η eta.sc	Θ theta.sc	Ι iota.sc	Κ kappa.sc	Λ lambda.sc	Μ mu.sc	Ν nu.sc	Ξ xi.sc
Ο omicron.sc	Π pi.sc	Ρ rho.sc	Σ sigma.sc	Τ tau.sc	Υ upsilon.sc	Φ phi.sc	Χ chi.sc	Ψ psi.sc	Ω omega.sc	ΐ iotatonos.sc	ϊ totadieresis.sc	ΐ totadieresis-tonos.sc	ΰ upsilontonos.sc
ÿ upsilondieresis.sc	Ό omicrontonos.sc	Ω omegatonos.sc	Ά alphatonos.sc	Έ epsilontonos.sc	Ή etatonos.sc	!	ı exclamdown.sc	?	¿ questiondown.sc	& ampersand.sc	’ commaaccentcomb.sc	’ acute.sc	˘ breve.sc



## Unencoded Glyphs

◊	̣	ˆ	¨	˙	˘	˝	ˉ	◌̇	◌̈	˜	˝	ˆ	ˆ
caron.sc	cedilla.sc	circum-ex.sc	dieresis.sc	dotaccent.sc	grave.sc	hungarumlaut.sc	macron.sc	ogonek.sc	ring.sc	tilde.sc	dblgrave.sc	dieresisacute.sc	dieresisgrave.sc

## Case Sensitive Forms

˙	ı	¿	{	}	[	]	(	)	—	–	–	–	«
periodcentered.case	exclamdown.case	questiondown.case	braceleft.case	braceright.case	bracketleft.case	bracketright.case	parenleft.case	parenright.case	emdash.case	endash.case	hyphen.case	softhyphen.case	guillemetleft.case
»	‹	›	@	‚	´	˘	◊	ˆ	¨	˙	˘	˘	˝
guillemetright.case	gulsingleft.case	gulsingright.case	at.case	commaaccentcomb.case	acute.case	breve.case	caron.case	cedilla.case	circum-ex.case	dieresis.case	dotaccent.case	grave.case	hungarumlaut.case
–	◌̇	◌̈	˜	˘	˝	ˆ	ˆ						
macron.case	ogonek.case	ring.case	tilde.case	cyzbreve.case	dblgrave.case	dieresisacute.case	dieresisgrave.case						

## Ligatures

Th	Ťh	Ṛh	ff	ffi	ffj	ffl	fi	fj	fl	ft	ft	fh	fi
T_h	Tcaron_h	Tcommaaccent_h	f_f	f_f_i	f_f_j	f_f_l	f_i	f_j	f_l	longs_t	longs_t	longs_h	longs_i
fl	ff												
longs_l	longs_long												

## Denominators

0	1	2	3	4	5	6	7	8	9	,	.	(	)
zero.dnom	one.dnom	two.dnom	three.dnom	four.dnom	ve.dnom	six.dnom	seven.dnom	eight.dnom	nine.dnom	comma.dnom	period.dnom	parenleft.dnom	parenright.dnom

## Unencoded Glyphs

-	¢	\$
hyphen.dnom	cent.dnom	dollar.dnom

### Numerators

0	1	2	3	4	5	6	7	8	9	,	.	(	)
zero.numr	one.numr	two.numr	three.numr	four.numr	-ve.numr	six.numr	seven.numr	eight.numr	nine.numr	comma.numr	period.numr	parenleft.numr	parenright.numr

-	¢	\$
hyphen.numr	cent.numr	dollar.numr

### Slashed Zero

0
zero.zero

### Lining Figures (Proportional)

0	1	2	3	4	5	6	7	8	9
zero.lf	one.lf	two.lf	three.lf	four.lf	-ve.lf	six.lf	seven.lf	eight.lf	nine.lf

### Old Style Figures (Proportional)

0	1	2	3	4	5	6	7	8	9	%	‰
zero.osf	one.osf	two.osf	three.osf	four.osf	-ve.osf	six.osf	seven.osf	eight.osf	nine.osf	percent.osf	perthousand.osf

### Old Style Figures (Tabular)

0	1	2	3	4	5	6	7	8	9
zero.tosf	one.tosf	two.tosf	three.tosf	four.tosf	-ve.tosf	six.tosf	seven.tosf	eight.tosf	nine.tosf

## Unencoded Glyphs

### Fraction

space.frac

### Other

Ł

ldot.latn\_CAT

l

ldot.latn\_CAT

i

i.latn\_TRK

á

a.sups

á

b.sups

á

d.sups

é

e.sups

h

h.sups

l

l.sups

m

m.sups

o

o.sups

r

r.sups

s

s.sups

t

t.sups

,

comma.subs

.

period.subs

-

hyphen.subs

,

comma.sups

-

hyphen.sups

.

period.sups

□

.notdef

.null

¢

cent.subs

\$

dollar.subs

¢

cent.sups

\$

dollar.sups

ff

ff

ffi

f-

ffi

f-

˘

cyzbreve

ˆ

cyr-ex

ˆˆ

dblgrave

ˆˆ

dieresisacute

ˆˆ

dieresisgrave

—

threequartersemdash

˘

undercommaaccent