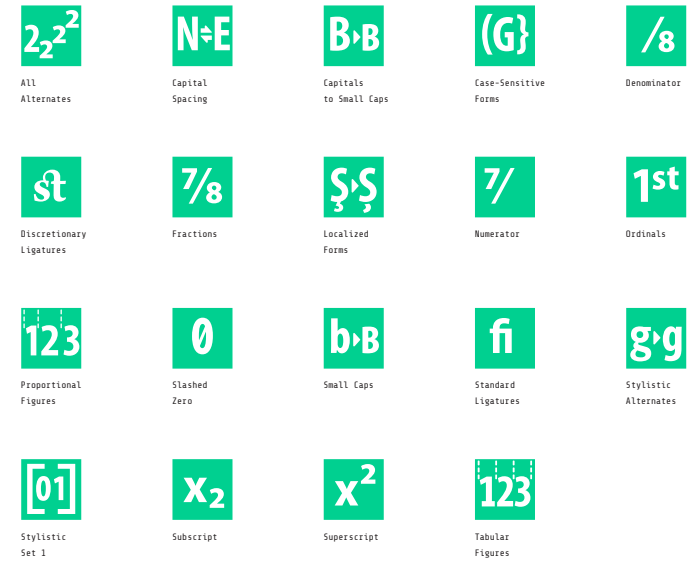


Technical Report [1114 Glyphs]

# ABezeh Slab

Thin  
ExtraLight  
Light  
Regular  
Medium  
Bold  
ExtraBold

## OT-Features, Scripts & Languages



Supported Script(s):

Latin  
Cyrillic  
Greek

0 languages and many more:



## Encoded Glyphs

### Basic Latin (0000-007F)

0020	!	"	#	\$	%	&	'	(	)	*	+	,	-	
002E	.	/	0	1	2	3	4	5	6	7	8	9	:	;
003C	<	=	>	?	@	A	B	C	D	E	F	G	H	I
004A	J	K	L	M	N	O	P	Q	R	S	T	U	V	W
0058	X	Y	Z	[	\	]	^	_	a	b	c	d	e	f
0067	g	h	i	j	k	l	m	n	o	p	q	r	s	t
0075	u	v	w	x	y	z	{		}	~				

## Encoded Glyphs

### Latin-1 Supplement (0080-00FF)

ı	ç	£	¤	¥	¦	§	©	à	«	¬	-	®	°
00A1	00A2	00A3	00A4	00A5	00A6	00A7	00A9	00AA	00AB	00AC	00AD	00AE	00B0
±	²	³	µ	¶	·	¹	º	»	¼	½	¾	¿	À
00B1	00B2	00B3	00B5	00B6	00B7	00B9	00BA	00BB	00BC	00BD	00BE	00BF	00C0
Á	Â	Ã	Ä	Å	Æ	Ç	È	É	Ê	Ë	Ì	Í	Î
00C1	00C2	00C3	00C4	00C5	00C6	00C7	00C8	00C9	00CA	00CB	00CC	00CD	00CE
Ï	Ð	Ñ	Ò	Ó	Ô	Õ	Ö	×	Ø	Ù	Ú	Û	Ü
00CF	00D0	00D1	00D2	00D3	00D4	00D5	00D6	00D7	00D8	00D9	00DA	00DB	00DC
Ý	Þ	ß	à	á	â	ã	ä	å	æ	ç	è	é	ê
00DD	00DE	00DF	00E0	00E1	00E2	00E3	00E4	00E5	00E6	00E7	00E8	00E9	00EA
ë	ì	í	î	ï	ð	ñ	ò	ó	ô	õ	ö	÷	ø
00EB	00EC	00ED	00EE	00EF	00F0	00F1	00F2	00F3	00F4	00F5	00F6	00F7	00F8
ù	ú	û	ü	ý	þ	ÿ							
00F9	00FA	00FB	00FC	00FD	00FE	00FF							

Encoded Glyphs

Latin Extended-A (0100-017F)

Ā	ā	Ă	ă	Ą	ą	Ć	ć	Ĉ	ĉ	Ċ	ċ	Č	č
0100	0101	0102	0103	0104	0105	0106	0107	0108	0109	010A	010B	010C	010D
Ď	ď	Đ	đ	Ē	ē	Ě	ě	È	è	Ě	ě	Ě	ě
010E	010F	0110	0111	0112	0113	0114	0115	0116	0117	0118	0119	011A	011B
Ĝ	ĝ	Ğ	ğ	Ġ	ġ	Ģ	ģ	Ĥ	ĥ	Ħ	ħ	Ĩ	ĩ
011C	011D	011E	011F	0120	0121	0122	0123	0124	0125	0126	0127	0128	0129
Ī	ī	Ĭ	ĭ	Į	į	İ	ı	IJ	ij	Ĵ	ĵ	Ƙ	ƙ
012A	012B	012C	012D	012E	012F	0130	0131	0132	0133	0134	0135	0136	0137
ƚ	Ł	ł	Ł	ł	Ł	ł	Ł	ł	Ł	ł	Ń	ń	Ņ
0138	0139	013A	013B	013C	013D	013E	013F	0140	0141	0142	0143	0144	0145
ŋ	Ń	ń	Ņ	ŋ	Ō	ō	Ŏ	ö	Ŏ	ö	Œ	œ	Ŕ
0146	0147	0148	014A	014B	014C	014D	014E	014F	0150	0151	0152	0153	0154
ŕ	Ŗ	ŗ	Ř	ř	Ś	ś	Ŝ	ș	Ș	ș	Š	š	Ţ
0155	0156	0157	0158	0159	015A	015B	015C	015D	015E	015F	0160	0161	0162

Encoded Glyphs

ƚ	Ŧ	ƚ	Ʀ	ƚ	Ū	ū	Ū	ū	Ū	ū	Ū	ū	Ū
0163	0164	0165	0166	0167	0168	0169	016A	016B	016C	016D	016E	016F	0170

ŭ	Ū	ŭ	Ŵ	ŵ	Ŷ	ŷ	ÿ	Ž	ž	Ž	ž	Ž	ž
0171	0172	0173	0174	0175	0176	0177	0178	0179	017A	017B	017C	017D	017E

Latin Extended-B (0180-024F)

f	Æ	æ	Ø	ø	Ş	ş	Ț	ț	J
0192	01FC	01FD	01FE	01FF	0218	0219	021A	021B	0237

Combining Diacritical Marks (0300-036F)

˘	˙	˚	˛	˜	˝	˙	˚	˚	˝	˝	˝	˝	˝
0300	0301	0302	0303	0304	0306	0307	0308	030A	030B	030C	0326	0327	0328

Greek and Coptic (0370-03FF)

´	ˆ	À	É	Η	Ι	Ο	Υ	Ω	ϊ	Α	Β	Γ	Δ
0384	0385	0386	0388	0389	038A	038C	038E	038F	0390	0391	0392	0393	0394

Ε	Ζ	Η	Θ	Ι	Κ	Λ	Μ	Ν	Ξ	Ο	Π	Ρ	Σ
0395	0396	0397	0398	0399	039A	039B	039C	039D	039E	039F	03A0	03A1	03A3

Τ	Υ	Φ	Χ	Ψ	Ω	ϊ	ÿ	ά	έ	ή	ί	ü	α
03A4	03A5	03A6	03A7	03A8	03A9	03AA	03AB	03AC	03AD	03AE	03AF	03B0	03B1

Encoded Glyphs

β 03B2	γ 03B3	δ 03B4	ε 03B5	ζ 03B6	η 03B7	θ 03B8	ι 03B9	κ 03BA	λ 03BB	μ 03BC	ν 03BD	ξ 03BE	ο 03BF
π 03C0	ρ 03C1	ς 03C2	σ 03C3	τ 03C4	υ 03C5	φ 03C6	χ 03C7	ψ 03C8	ω 03C9	ϊ 03CA	ϋ 03CB	ό 03CC	ύ 03CD
ώ 03CE													

Cyrillic (0400-04FF)

Ё 0401	Ђ 0402	Ѓ 0403	Є 0404	Ѕ 0405	І 0406	Ї 0407	Ј 0408	Љ 0409	Њ 040A	Ћ 040B	Ќ 040C	Ў 040E	Џ 040F
А 0410	Б 0411	В 0412	Г 0413	Д 0414	Е 0415	Ж 0416	З 0417	И 0418	Й 0419	К 041A	Л 041B	М 041C	Н 041D
О 041E	П 041F	Р 0420	С 0421	Т 0422	У 0423	Ф 0424	Х 0425	Ц 0426	Ч 0427	Ш 0428	Щ 0429	Ъ 042A	Ы 042B
Ь 042C	Э 042D	Ю 042E	Я 042F	а 0430	б 0431	в 0432	г 0433	д 0434	е 0435	ж 0436	з 0437	и 0438	й 0439



Encoded Glyphs

К 043A	Л 043B	М 043C	Н 043D	О 043E	П 043F	р 0440	С 0441	Т 0442	у 0443	Ф 0444	Х 0445	Ц 0446	Ч 0447
Ш 0448	Щ 0449	Ъ 044A	Ы 044B	Ь 044C	Э 044D	Ю 044E	Я 044F	ё 0451	ђ 0452	ѓ 0453	Є 0454	Ѕ 0455	ї 0456
ï 0457	ĵ 0458	љ 0459	њ 045A	ћ 045B	ќ 045C	ў 045E	џ 045F	Ѣ 0462	ѣ 0463	Ө 0472	ө 0473	Ɔ 0474	Ʒ 0475
Ґ 0490	ґ 0491	Ƒ 0492	ƒ 0493	Ж 0496	ж 0497	Қ 049A	қ 049B	Ң 04A2	ң 04A3	Ƴ 04AE	ƴ 04AF	Ƶ 04B0	ƶ 04B1
Ҳ 04B2	ҳ 04B3	Ҷ 04B6	ҷ 04B7	Һ 04BA	һ 04BB	І 04C0	і 04CF	Ә 04D8	ә 04D9	Й̄ 04E2	й̄ 04E3	Ө 04E8	ө 04E9
Ȳ 04EE	ȳ 04EF												

Latin Extended Additional (1E00-1EFF)

Ẁ 1E80	ẁ 1E81	Ẃ 1E82	ẃ 1E83	Ẅ 1E84	ẅ 1E85	ß 1E9E	Ỳ 1EF2	ỳ 1EF3
-----------	-----------	-----------	-----------	-----------	-----------	-----------	-----------	-----------

## Encoded Glyphs

### Greek Extended (1F00–1FFF)

ἄ 1F70	ἅ 1F71	ἔ 1F72	ἕ 1F73	ἦ 1F74	ἧ 1F75	ἰ 1F76	ἱ 1F77	ὀ 1F78	ὁ 1F79	ὐ 1F7A	ὕ 1F7B	ὖ 1F7C	ὗ 1F7D
ἁ̃ 1FB0	ἂ̃ 1FB1	ἃ̃ 1FB6	Ἀ̃ 1FB8	Ἀ̄ 1FB9	À 1FBA	Á 1FBB	˜ 1FC0	˝ 1FC1	ñ 1FC6	È 1FC8	É 1FC9	È 1FCA	Í 1FCB
İ 1FD0	ī 1FD1	ì 1FD2	í 1FD3	ĩ 1FD6	ï 1FD7	Ĭ 1FD8	Ī 1FD9	Ì 1FDA	Í 1FDB	Û 1FE0	Ū 1FE1	Û 1FE2	Ū 1FE3
Ū 1FE6	Ū̃ 1FE7	Ÿ 1FE8	Ÿ̄ 1FE9	ÿ 1FEA	ÿ̇ 1FEB	˚ 1FED	˚ 1FEE	˘ 1FEF	Ẃ 1FF6	Ò 1FF8	Ó 1FF9	Ò 1FFA	Ó 1FFB
˙ 1FFD													

### General Punctuation (2000–206F)

— 2012	— 2013	— 2014	‘ 2018	’ 2019	‚ 201A	“ 201C	” 201D	„ 201E	† 2020	‡ 2021	• 2022	… 2026	‰ 2030
< 2039	> 203A	/ 2044											

## Encoded Glyphs

### Superscripts and Subscripts (2070-209F)

0 2070	i 2071	4 2074	5 2075	6 2076	7 2077	8 2078	9 2079	+ 207A	- 207B	= 207C	( 207D	) 207E	n 207F
0 2080	1 2081	2 2082	3 2083	4 2084	5 2085	6 2086	7 2087	8 2088	9 2089	+ 208A	- 208B	= 208C	( 208D
) 208E													

### Currency Symbols (20A0-20CF)

€ 20AC
-----------

### Letterlike Symbols (2100-214F)

Nº 2116	™ 2122	Ω 2126	e 212E
------------	-----------	-----------	-----------

### Number Forms (2150-218F)

1/3 2153	2/3 2154	1/8 215B	3/8 215C	5/8 215D	7/8 215E
-------------	-------------	-------------	-------------	-------------	-------------

### Arrows (2190-21FF)

← 2190	↑ 2191	→ 2192	↓ 2193	↔ 2194	↕ 2195	↖ 2196	↗ 2197	↘ 2198	↙ 2199
-----------	-----------	-----------	-----------	-----------	-----------	-----------	-----------	-----------	-----------

## Encoded Glyphs

### Mathematical Operators (2200-22FF)



2202



2205



2206



220F



2211



2212



221A



221E



222B



2248



2260



2264



2265



22C6

### Geometric Shapes (25A0-25FF)



25CA

### Alphabetic Presentation Forms (FB00-FB4F)



FB00



FB01



FB02



FB03



FB04

### Emoticons (1F600-1F64F)



1F600



1F609



1F610



1F612



1F61B

## Unencoded Glyphs

### Small Capitals

À	Á	Ă	Â	Ä	À	Ā	Ą	Å	Ã	Æ	É	B	C
a.sc	aaacute.sc	abreve.sc	acircum-ex.sc	adieresis.sc	agrave.sc	amacron.sc	aogonek.sc	aring.sc	atilde.sc	ae.sc	aeacute.sc	b.sc	c.sc
Ć	Č	Ç	Ĉ	Ċ	D	Ð	Ǿ	Đ	E	É	Ě	Ě	Ê
caacute.sc	ccaron.sc	ccedilla.sc	ccircum-ex.sc	cdotaccent.sc	d.sc	eth.sc	dcaron.sc	dcroat.sc	e.sc	eaacute.sc	ebreve.sc	ecaron.sc	ecircum-ex.sc
Ë	Ĕ	È	Ē	Ę	F	FI	FL	G	Ǧ	Ĝ	Ġ	Ġ	H
edieresis.sc	edotaccent.sc	egrave.sc	emacron.sc	eogonek.sc	f.sc	fi.sc	fl.sc	g.sc	gbreve.sc	gcircum-ex.sc	gcommaaccent.sc	gdotaccent.sc	h.sc
Ĥ	Ĥ	I	I	Í	Ĭ	Î	Ï	Ì	IJ	Ī	Ĳ	Ĩ	J
hbar.sc	hcircum-ex.sc	i.sc	idotless.sc	iacute.sc	ibreve.sc	icircum-ex.sc	idieresis.sc	igrave.sc	ij.sc	imacron.sc	logonek.sc	itilde.sc	j.sc
Ĵ	K	Ķ	K	L	Ĺ	Ł	Ł	Ł	Ł	M	N	Ń	Ň
jcircum-ex.sc	k.sc	kcommaaccent.sc	kgreenlandic.sc	l.sc	lacute.sc	lcaron.sc	lcommaaccent.sc	ldot.sc	lslash.sc	m.sc	n.sc	nacute.sc	ncaron.sc
Ŋ	Ŋ	Ñ	O	Ó	Ö	Ô	Ö	Ò	Ö	Ō	Ø	Ø	Õ
ncommaaccent.sc	eng.sc	ntilde.sc	o.sc	oacute.sc	obreve.sc	ocircum-ex.sc	odieresis.sc	ograve.sc	ohungarumlaut.sc	omacron.sc	oslash.sc	oslashacute.sc	otilde.sc
Œ	P	Ɔ	Q	R	Ŕ	Ř	Ŗ	S	Ś	Š	Ş	Ŝ	Ș
oe.sc	p.sc	thorn.sc	q.sc	r.sc	racute.sc	rcaron.sc	rcommaaccent.sc	s.sc	sacute.sc	scaron.sc	scedilla.sc	scircum-ex.sc	scommaaccent.sc

## Unencoded Glyphs

ß germandbls.sc	Ŧ t.sc	ƒ tbar.sc	ŧ tcaron.sc	Ŧ tcedilla.sc	Ŧ tcommaaccent.sc	U u.sc	Ú uacute.sc	Û ubreve.sc	Û ucircum-ex.sc	Ü udieresis.sc	Ù ugrave.sc	Ú uhungarumlaut.sc	Ū umacron.sc
Ů uogonek.sc	Ů uring.sc	Û utilde.sc	V v.sc	W w.sc	Ŵ wacute.sc	Ŷ wcircum-ex.sc	Ẁ wdieresis.sc	Ẃ wgrave.sc	X x.sc	Y y.sc	Ý yacute.sc	Û ycircum-ex.sc	ÿ ydieresis.sc
ÿ ygrave.sc	Z z.sc	Ž zacute.sc	Ž zcaron.sc	Ż zdotaccent.sc	А a-cy.sc	Б b-cy.sc	В ve-cy.sc	Г ge-cy.sc	Ґ gje-cy.sc	Ґ gheupturn-cy.sc	Д de-cy.sc	Е ie-cy.sc	Ё io-cy.sc
Ж zhe-cy.sc	З ze-cy.sc	И ii-cy.sc	Й iishort-cy.sc	К ka-cy.sc	Ѐ kje-cy.sc	Л el-cy.sc	М em-cy.sc	Н en-cy.sc	О o-cy.sc	П pe-cy.sc	Р er-cy.sc	С es-cy.sc	Т te-cy.sc
У u-cy.sc	Ў ushort-cy.sc	Ф ef-cy.sc	Х ha-cy.sc	Ч che-cy.sc	Ц tse-cy.sc	Ш sha-cy.sc	Щ shcha-cy.sc	Ѡ dže-cy.sc	Ь softsign-cy.sc	Ъ hardsign-cy.sc	Ы yeru-cy.sc	Ь lje-cy.sc	Нь nje-cy.sc
Ѕ dze-cy.sc	Є e-cy.sc	Э ereversed-cy.sc	І i-cy.sc	İ yi-cy.sc	Ј je-cy.sc	Ѧ tsh-cy.sc	Ю iu-cy.sc	Я ia-cy.sc	Ѣ dje-cy.sc	Ѥ yat-cy.sc	Ѧ ta-cy.sc	Ѧ izhitsa-cy.sc	Ѧ ghestroke-cy.sc
Ж zhedescender-cy.sc	Қ kadedescender-cy.sc	Ң endescender-cy.sc	У ustrait-cy.sc	Ү ustraitstroke-cy.sc	Ҙ hadescender-cy.sc	Ҝ chedescender-cy.sc	Һ shha-cy.sc	І palochka-cy.sc	Ә schwa-cy.sc	Й imacron-cy.sc	Ө obarred-cy.sc	Ū umacron-cy.sc	А alpha.sc

## Unencoded Glyphs

Β	Γ	Δ	Ε	Ζ	Η	Θ	Ι	Κ	Λ	Μ	Ν	Ξ	Ο
beta.sc	gamma.sc	delta.sc	epsilon.sc	zeta.sc	eta.sc	theta.sc	iota.sc	kappa.sc	lambda.sc	mu.sc	nu.sc	xi.sc	omicron.sc
Π	Ρ	Σ	Σ	Τ	Υ	Φ	Χ	Ψ	Ω	ÿ	Ι	İ	Ι
pi.sc	rho.sc	sigma-nal.sc	sigma.sc	tau.sc	upsilon.sc	phi.sc	chi.sc	psi.sc	omega.sc	Upsilondieresis.sc	totatonos.sc	totadieresis.sc	iotadieresisstosos.sc
Υ	Υ	Υ	Ο	Ω	Α	Ε	Η	Α	Α	Α	Α	Α	Ε
upsilontonos.sc	upsilondieresis.sc	upsilondieresisstosos.sc	omicrontonos.sc	omegatonos.sc	alphatonos.sc	epsilontonos.sc	etatonos.sc	alphavaria.sc	alphaoxia.sc	alphaperispomeni.sc	alphavrachy.sc	alphamacron.sc	epsilonvaria.sc
Ε	Η	Η	Η	Ι	Ι	Ι	Ι	Ι	Ι	Ι	Ι	Ο	Ο
epsilonnoxia.sc	etavaria.sc	etaoxia.sc	etaperispomeni.sc	iotavaria.sc	iotaoxia.sc	iotaperispomeni.sc	iotavrachy.sc	iotamacron.sc	iotadialytikavaria.sc	iotadialytikaoxia.sc	iotadialytikaperispomeni.sc	omicronvaria.sc	omicronnoxia.sc
Υ	Υ	Υ	Υ	Υ	Υ	Υ	Υ	Ω	Ω	Ω	¨	·	˘
upsilonvaria.sc	upsilonnoxia.sc	upsilonperispomeni.sc	upsilonvrachy.sc	upsilonmacron.sc	upsilondialytikavaria.sc	upsilondialytikaoxia.sc	upsilondialytikaperispom	omegavaria.sc	omegaoxia.sc	omegaperispomeni.sc	dieresiscomb.sc	dotaccentcomb.sc	gravecomb.sc
ˊ	ˆ	ˆ	ˆ	ˆ	◦	˜	—	,	¸	¸	˙		
acutecomb.sc	hungarumlautcomb.sc	circum-excomb.sc	caroncomb.sc	brevecomb.sc	ringcomb.sc	tildecomb.sc	macroncomb.sc	commaaccentcomb.sc	cedillacomb.sc	ogonekcomb.sc	dotlessj.sc		
¨	·	˘	ˊ	ˆ	ˆ	ˆ	ˆ	◦	˜	—	,	¸	¸
dieresiscomb.case	dotaccentcomb.case	gravecomb.case	acutecomb.case	hungarumlautcomb.case	circum-excomb.case	caroncomb.case	brevecomb.case	ringcomb.case	tildecomb.case	macroncomb.case	commaaccentcomb.case	cedillacomb.case	ogonekcomb.case

## Unencoded Glyphs



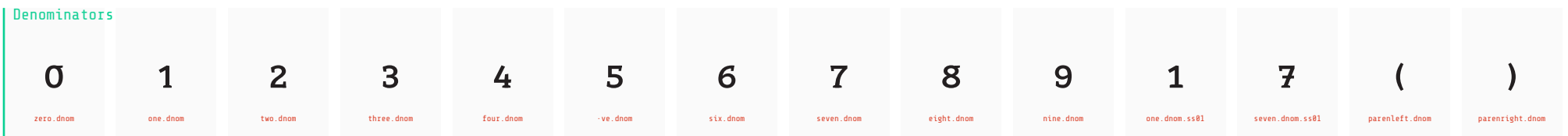
## Localized Forms



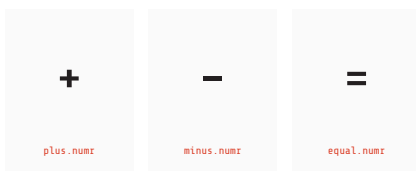
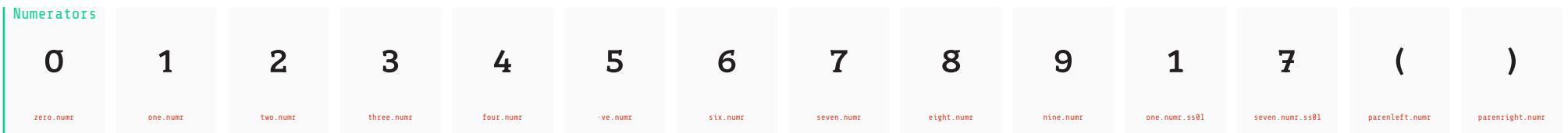
## Ligatures



## Denominators



## Numerators





## Unencoded Glyphs

### Slashed Zero

Ø

zero.zero

Ø

zero.tf.zero

### Tabular Figures

1

one.tf.ss01

7

seven.tf.ss01

0

zero.tf

1

one.tf

2

two.tf

3

three.tf

4

four.tf

5

-ve.tf

6

six.tf

7

seven.tf

8

eight.tf

9

nine.tf

1/2

onehalf.tf.ss01

1/3

onethird.tf.ss01

1/4

onequarter.tf.ss01

1/8

oneeighth.tf.ss01

7/8

seveneighths.tf.ss01

1/2

onehalf.tf

1/3

onethird.tf

2/3

twothirds.tf

1/4

onequarter.tf

3/4

threequarters.tf

1/8

oneeighth.tf

5/8

threeeighths.tf

7/8

-veighths.tf

7/8

seveneighths.tf

#

numersign.tf

Ç

cent.tf

¤

currency.tf

\$

dollar.tf

€

Euro.tf

f

-orin.tf

£

sterling.tf

¥

yen.tf

%

percent.tf.ss01

‰

perthousand.tf.ss01

+

plus.tf

-

minus.tf

×

multiply.tf

÷

divide.tf

=

equal.tf

≠

notequal.tf

>

greater.tf

<

less.tf

≥

greaterequal.tf

≤

lessequal.tf

±

plusminus.tf

≈

approxequal.tf

~

asciitilde.tf

¬

logicalnot.tf

∞

in-nity.tf

∏

product.tf

∑

summation.tf

∂

partialdiff.tf

%

percent.tf

‰

perthousand.tf

◊

lozenge.tf

§

section.tf

°

degree.tf

Nº

numero.tf

### Stylistic Set 1

ɑ

a.ss01

á

aacute.ss01

ă

abreve.ss01

â

acircum-ex.ss01

ä

adieresis.ss01

à

agrave.ss01

ā

amacron.ss01

ą

ogonek.ss01

å

aring.ss01

ã

atilde.ss01

ß

germandbls.ss01

1

one.ss01

7

seven.ss01

1

oneinferior.ss01

## Unencoded Glyphs

7	1	7	1/2	1/3	1/4	1/8	7/8	%	‰
seveninferior.ss01	onesuperior.ss01	sevensuperior.ss01	onehalf.ss01	onethird.ss01	onequarter.ss01	oneeighth.ss01	seveneighths.ss01	percent.ss01	perthousand.ss01

## Other

?	'	˘
.notdef	caron.alt	brevecomb-cy